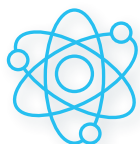


how to GET INVOLVED WITH RESEARCH during your PharmD



Research skills are **highly marketable** for numerous pharmacist positions and considered essential if pursuing post-graduate fellowship & residency training.

The **range of research** that students complete is broad: wet lab based in vitro studies, translational pharmacology, pharmacokinetic and pharmacodynamic modeling, pharmacoepidemiology, health outcomes, clinical trials, and more!

You can complete research **anytime during your PharmD education**, but the earlier the better! Most students begin as a P2/P3. Dual degrees & micro-credential programs have clearly defined timelines.

All UB SPPS faculty are potential research mentors. Talk with your advisor about who might be a good fit for you based on your interests and career goals.

RESEARCH-DRIVEN DUAL DEGREES

MS in Pharmaceutical
Sciences

MS in Pharmacometrics
and Personalized
Pharmacotherapy

Masters of Public Health

MS in Clinical and
Translational Therapeutics

MICRO-CREDENTIAL PROGRAMS

Clinical Research Program

Scholars Program

Pharmacometrics Modeling
Program

Pharmacogenomics and
Transport Program

INDEPENDENT STUDY

Work directly with a faculty
member through PHM598
course (independent study)
or research elective APPE.

Can be a longitudinal
experience based on student
and faculty goals.